

Name _____

Class Period _____

UTAH HISTORY

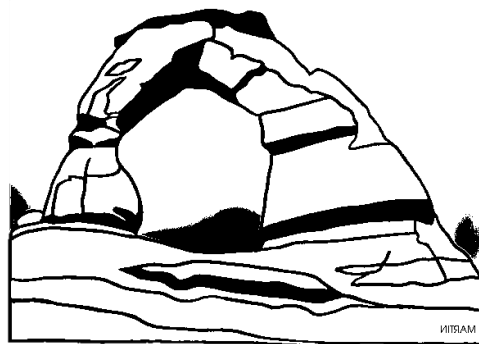
UNIT 1 PACKET: BECOMING A UTAH HISTORIAN

Assignments:

- "History Of" Report _____/10 points
 - History Apps _____/10 points
 - Utah's Geography Maps _____/30 points
 - Utah's Geology: Cause & Effect _____/10 points
 - Review _____/15 points
- TOTAL** _____/75 points

Important Dates:

- REVIEW DAY-A Day: January 28th/B Day: January 29th
- TEST DAY-A Day January 30th/B Day: January 31st
- PACKET DUE-on the day of the test



This packet is EXTREMELY important. It contains all assignments for the unit and will also serve as the study guide for the test. If you lose it, you will have to re-do the entire thing!)

Bring it to class with you each day-----YOU WILL TURN THIS IN ON THE DAY OF THE TEST.

"HISTORY OF" REPORT

From chocolate chip cookies to skateboarding---everything has a history. History becomes more exciting when you realize that some of your favorite things have very interesting and unusual origins. Think about something (anything) that you'd like to know a little more about.....then follow the directions below.

DIRECTIONS

- Pick a topic-_____
- Google it.
- Write 1 paragraph to explain the history of this topic-

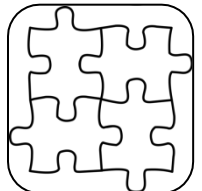
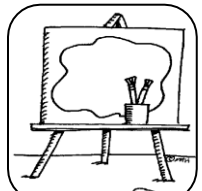
- Cite your source- (where did you get your information)

**BONUS 5 Points if you type your paragraph and staple it to this packet.

SCORE ____/10

HISTORY APPS

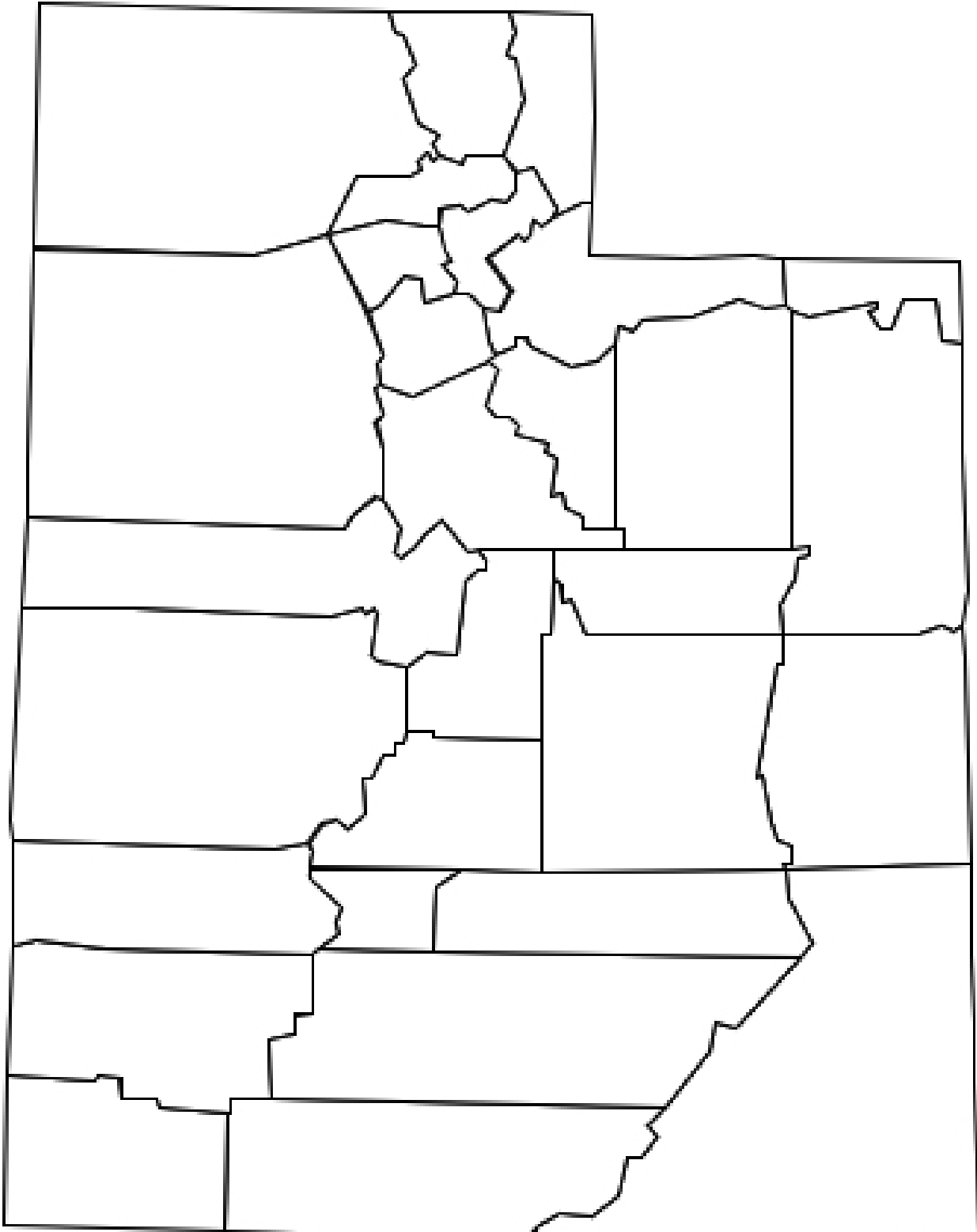
“App” is short for application. Apps help you to accomplish tasks more easily and efficiently. Learn how to use the history apps below—and become a pro Utah Historian! These skills will help you do well—plus teachers only want students that have good skills! Write the title & an explanation for each History Apps as we discuss them in class.



Utah's Geography: Maps

UTAH'S COUNTIES (use page 313 in textbook)

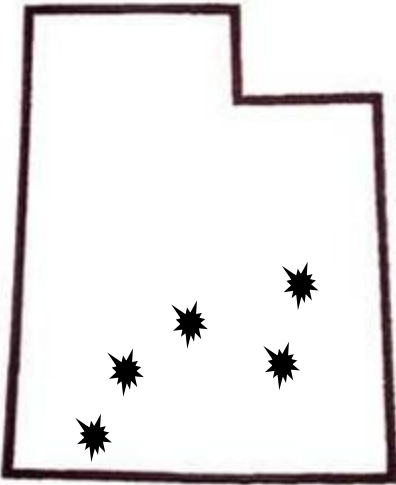
- Label all 29 counties. Please write small and neat.
- Label each county seat. (little cities with stars)
- Color all counties NEATLY (if it is not your best work—you won't get any credit!). Make sure that counties next to each other are not the same color.



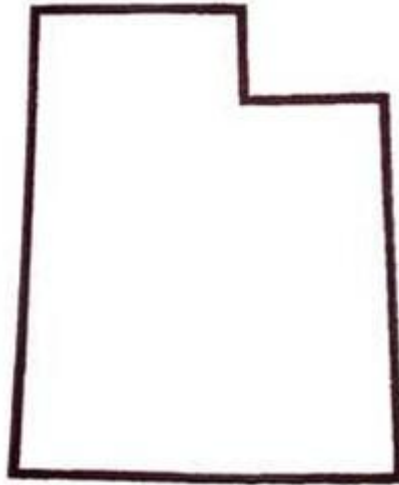
Label the 6 states that surround Utah.



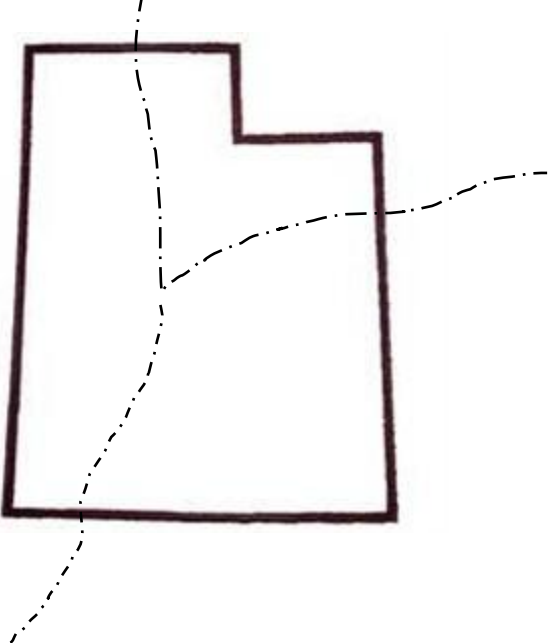
Label Utah's 5 National Parks



Draw in 4 Physical Features



Label Utah's 3 land regions



What are 2 cities in your county?

What is the Utah's Capital?

SCORE ____/30

UTAH'S GEOLOGY: CAUSE AND EFFECT

Directions: Geology is the history of the land. Complete the graphic organizer to show the cause and effect of how natural forces have shaped the environment. The cause is the event that happened. The effect is the outcome or result of the event. We will do the first cause and effect as a class.

CAUSE	EFFECT
During the Paleozoic era, the remains of plants and animals decayed and returned to the ground. (page 29)	
	The layers hardened to form limestone and sandstone. (page 29)
North America was crunched together from the pressure of the Pacific and Atlantic Oceans. (page 32)	
	The beautiful canyons of southern Utah were formed. (page 33)
	Salt from Utah is used in water softeners and to melt ice on the roads. (page 34)
	Glaciers formed in the Wasatch and Uinta Mountains. (page 36)
The glaciers melted. (page 36)	
Mud slides, rock slides, floods, and earthquakes are evidence that the earth is still changing. (page 38)	

UTAH COUNTIES REVIEW GAME

DIRECTIONS: Go to this website- <http://www.purposegames.com/game/utah-counties-quiz> To review for your upcoming test you need to play the counties game a total of 5 times. Record your times below and have another classmate initial to verify.

ATTEMPTS:	TIME TAKEN:	INITIALS:
1		
2		
3		
4		
5		

Geography: Where is Utah?

1. What is latitude?
2. What is longitude?
3. What are the 6 states that surround Utah?
4. Know the names of each of the National Parks
5. Describe where Utah is.....
6. What is the climate like in Utah?
7. What three factors influence the climate?
8. How does the climate change across the state?

Map Skills

9. Know what a legend, scale, and a compass are.
10. Know the difference between a political, physical, road, and thematic map.
11. Know where the three regions are and be able to identify them on a map
 - o Great Basin Region
 - o Rocky Mountain Region
 - o Colorado Plateau Region
12. What is sedimentary rock?

13. What is it made of? How is it formed?
14. Where is sedimentary rock found in Utah?
15. Why is this an important feature of Utah?

Geology

16. Name dinosaurs that lived in Utah
17. How were the Rocky Mountains formed?
18. What is a fault line?
19. How was Lake Bonneville created?
20. How did Lake Bonneville influence the geography of Utah?
21. What is the bench and how was it formed?
22. What lakes did it leave behind?
23. How much of Utah did it cover?
24. How do natural forces continue to shape Utah today? Be specific for each.
 - Wind
 - Water
 - Ice
 - Floods
 - Earthquakes
 - Rock and mud slides
25. What should you do during an earthquake?
26. What should you check on after an earthquake?

